



7 Palettes

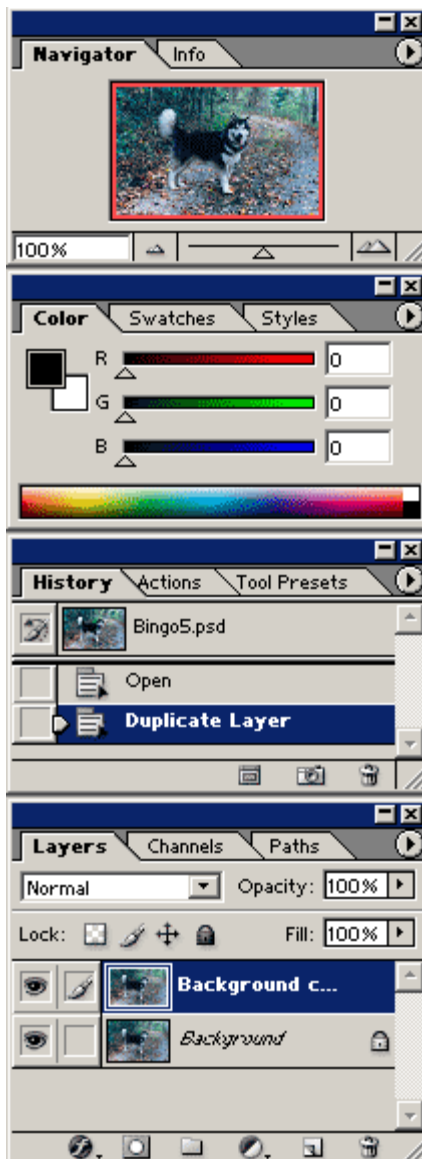
[Navigator](#) [Info](#)

[Color](#) [Swatches](#) [Styles](#)

[History](#) [Actions](#) [Tool Presets](#)

[Layers](#) [Channels](#) [Paths](#)

[File Browser](#)



To navigate through this section, once you get to individual palette's pages, please use the Jump menu that appears on the left side of each page.

To display a palette which is not currently on the screen, choose Window > [palette name], or to remove a palette from view, choose Window > [palette name]. You can just as easily click the X in the upper right hand corner of any palette to close it.

To hide all palettes and the toolbar, press the Tab key. To hide the palettes, but leave the toolbar in view, hold down the Shift key while pressing the Tab key. Pressing the Tab key again will bring them all back. This can be a big help if the palettes are overlapping an image you are trying to work on.

An individual palette can be moved out of its group by dragging on its name tab. Palette size can be adjusted by dragging on the lower right corner of the palette.

To bring a palette out of the well, click on its name tab and drag it out. To return it to the palette well (if it doesn't do so automatically) click on the little arrow in the upper right corner of the palette and choose Dock to Palette Well.

The particular way palettes are arranged on your screen can either be saved, or can always return to the default arrangement each time you open Photoshop. Choose either

option in Edit > Preferences > General by checking or unchecking Save Palette Locations. To return all palettes to the default configuration while Photoshop is still open, use Window > Workspace > Reset Palette Locations.

New in Photoshop 7 is the ability to save workspace configurations. This includes the position of all open palettes and movable dialogs. You can save as many workspace arrangements as you like, possibly setting up custom workspaces for particular types of work. To save a workspace, set up your Photoshop 7 window the way you want it, then choose Window > Workspace > Save Workspace. You'll get a name dialog after which the that workspace name will appear at the bottom of the Workspace menu.

A palette's options menu is accessed by pressing on the arrow in the top right hand corner of the palette. As with all things Photoshop, palettes also contain a ton of context menus. Try right-clicking on just about anything and you'll get a menu of relevant commands.

You can find detailed descriptions about all the tools in the [7 Tools](#) index.

I have an entire section devoted to the [Blend Modes](#), with many large illustrations showing each modes effects. There are also separate pages on [Image Resolution](#), [Anti-aliasing](#), and [Feathering](#).

[Photoshop Tips](#) | [Shadows and Light](#)
[FreePhotos](#) | [Filler Images](#)
[PS Books](#) | www.arraich.com
[Animal Rights](#) | [Table of Contents](#)
jay@arraich.com

Copyright © 2000-2004 by Jay Arraich. All rights reserved.
All photographs copyright © 2000-2004 by Jay Arraich.