

Project 1a: Hand lettered Roman Capital Letters

Typography

Barbara Yale-Read

Project Description

1. A study of form, proportion and spacing of Roman Capital letters
2. Exploration of the use of contrast through
 - a. Change of size
 - b. Change of weight
 - c. Change of color
3. Use of gouache and ink
4. Symmetrical Layout

SIZE: approximately 12" X 18"

MATTED: 18" X 24"

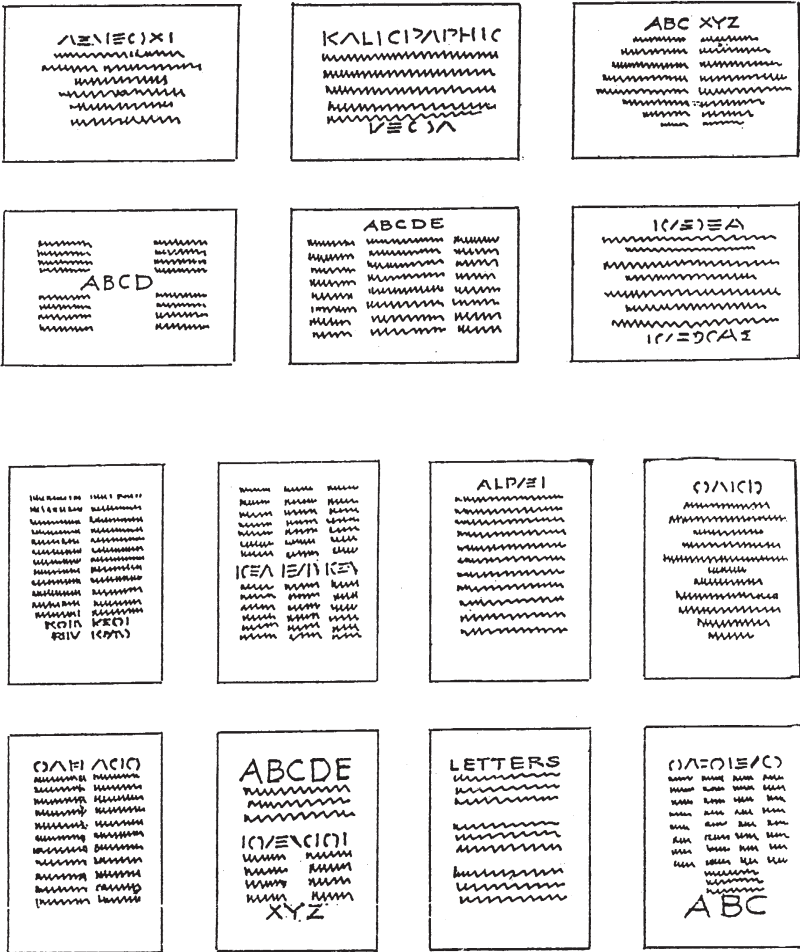
COLORS: black plus one color on colored paper

Directions

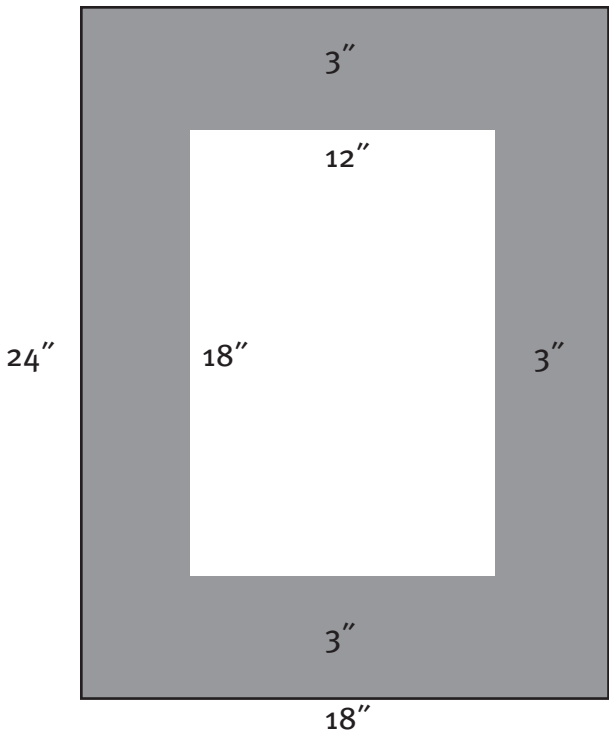
Using hand lettered Roman capital letters, choose one of the selections about letters and write it out. You may choose a quotation of your own about the alphabet, typography or letters. Make your work more interesting by using contrast. Change the size of your letters, vary the weight of your letter and use black ink plus one color of gouache. Be conscious of good letter spacing between both letters and words. Try not to have "rivers" of white space in your piece. Good proportion of the capital letters is essential, review the sheet on proportions of letter forms. Plan for margins on all sides and have more space at the bottom than at the top of the page. Create a symmetrical layout for your piece (see below). Either black ink or the color of gouache you have chosen may be used for the major part of your writing with the other color used as the accent.

(continued on next page)

Symmetrical Layout Examples



Matting Directions



Mat carefully using an 18" x 24" mat.

Format may be horizontal or vertical.