

Project 1b: Haiku Poem using Monoline Lower Case and  
Upper Case Roman Letters

# Typography

Barbara Yale-Read

## Project Description

Handlettered Haiku poem using Roman sans serif majuscules and minuscules and asymmetrical layout

1. Study of sans-serif Roman majuscules and minuscules, monoline pen
2. Continued exploration of the use of contrast through
  - a. Change of size
  - b. Change of weight
  - c. Change of color
  - d. Use of negative space
3. Using 2 colors of gouache on colored surface
4. Exploration of symmetrical Layout

**SIZE:** 12" X 12"

**MATTED:** 18" X 24"

**COLORS:** 2 colors on colored paper

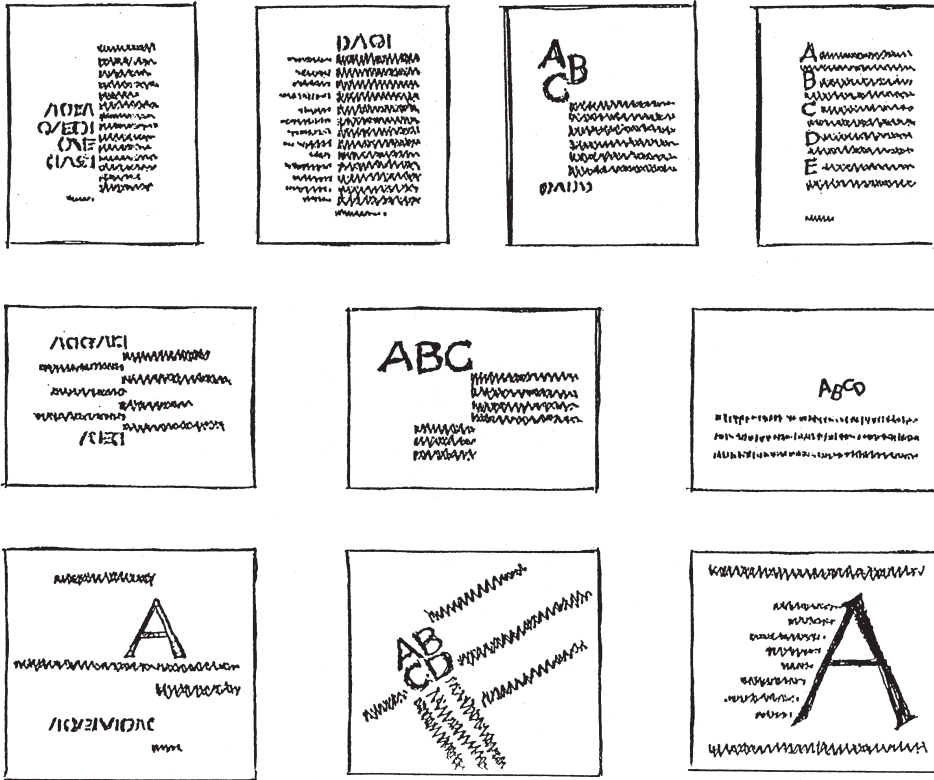
## Directions

Choose a Haiku poem either from the handout or that you research. Write out the poem in upper and lower case letters. Create a balanced asymmetrical or approximate symmetrical layout where all the space, both positive and negative, is carefully considered. Key words or phrases may be repeated as a compositional device, or you may use the Japanese phonetic translation along with the English. Try to avoid being trite or corny, or of using literal images. Include the name of the author. Use 2 colors of gouache; each color may be tinted, toned or shaded on colored paper. If you wish to use a Japanese character in the composition, find the appropriate character and enlarge — don't attempt Japanese brush lettering.

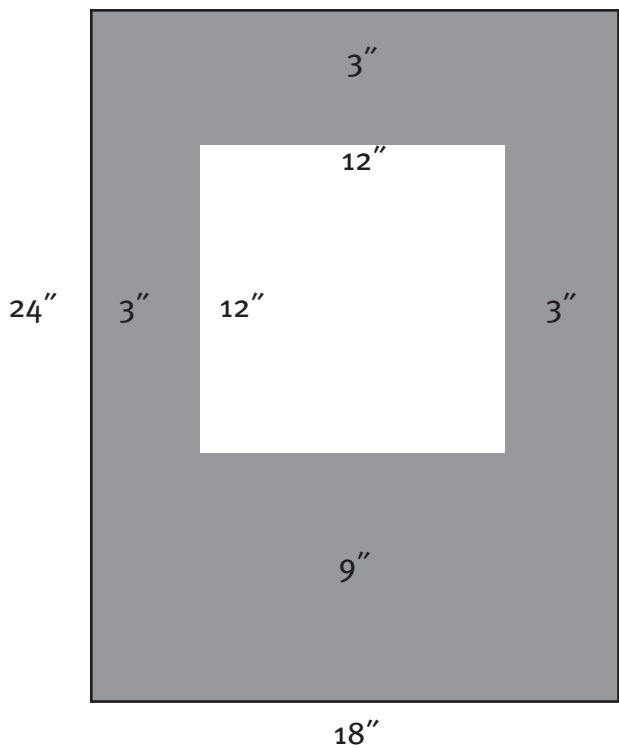
Show some contrast of size and weight; author's name, key words and/or title may be done in all capitals.

(continued on next page)

# Asymmetrical Layout Examples



## Matting Directions



Mat carefully using an 18" x 24" mat.