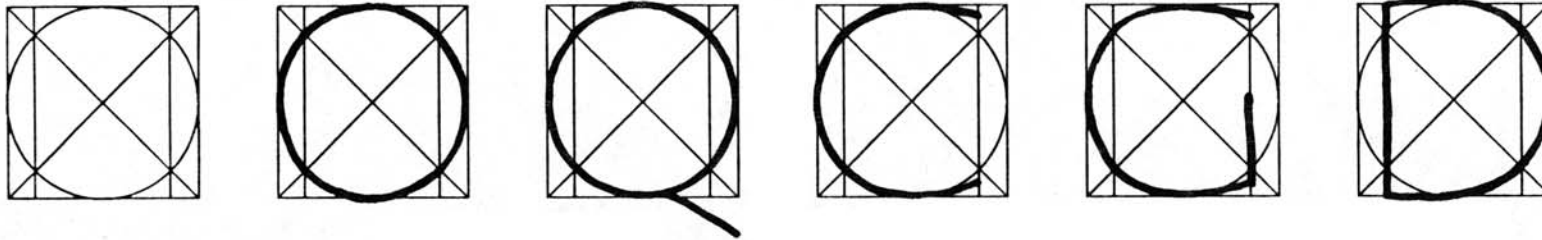


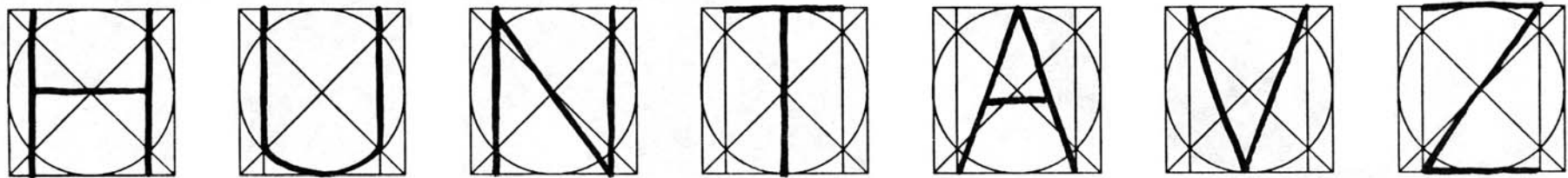
# ROMAN CAPITALS

## SKELETAL FORMS AND RELATIVE PROPORTIONS

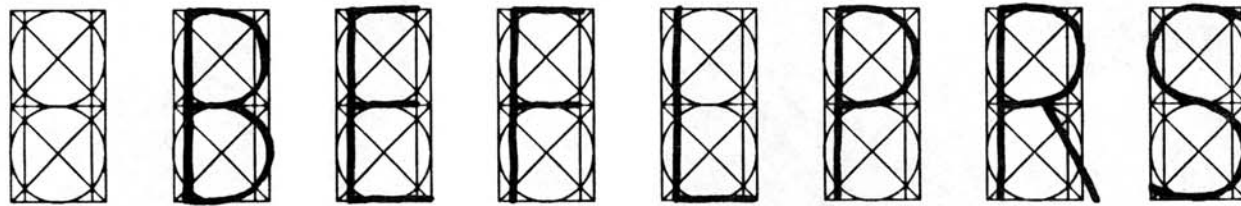
ROUND LETTERS: O, Q, C, G, D



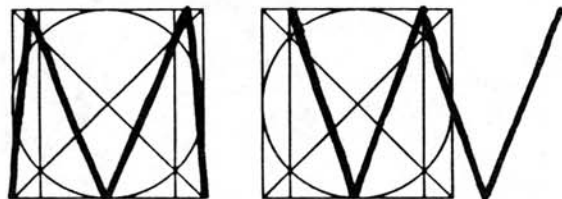
RECTANGULAR LETTERS: H, U, N, T, A, V, Z



NARROW LETTERS (1/2 WIDTH): B, E, F, L, P, R, S



WIDE LETTERS: M, W



K, X, Y, I, J

